

To be setup in accordance with Standard Plans 102-615 102-602 & 102-660

**TABLE 2
TAPER LENGTH "L"**

Work Zone Speed (mph)	Min. Length (feet)	Max. Length (feet)
≤ 40	150	300
41 - 50	200	400
51 - 60	300	600
61 - 70	400	800
71 - 80	500	1000
81 - 90	600	1200
91 - 100	700	1500

**TABLE 3
WORK ZONE SIGN SPACING "X"**

Road Type	Min. Spacing (feet)
Arterials and Collectors with Work Zone Speed ≤ 45 mph	200
Arterials and Collectors with Work Zone Speed ≥ 45 mph	500
Limited Access Roadways with Work Zone Speed ≤ 55 mph	1,500
Limited Access Roadways with Work Zone Speed ≥ 55 mph	3,000

**TABLE 4
BUFFER LENGTH "B"**

Work Zone Speed (mph)	Min. Length (feet)
≤ 25	155
26 - 35	250
36 - 45	305
46 - 55	425
56 - 65	570
66 - 75	685
76 - 85	830
86 - 95	1,000
96 - 105	1,200

**TABLE 1
CHANNELIZING DEVICE SPACING**

Work Zone Speed (mph)	Cones or Tubular Markers	Type I Barricades, Type II Barricades, Vertical Panels, or Drums
≤ 30	25	50
31 - 40	30	75
41 - 50	40	100
51 - 60	50	150
61 - 70	75	225
71 - 80	100	300
81 - 90	150	450
91 - 100	200	600

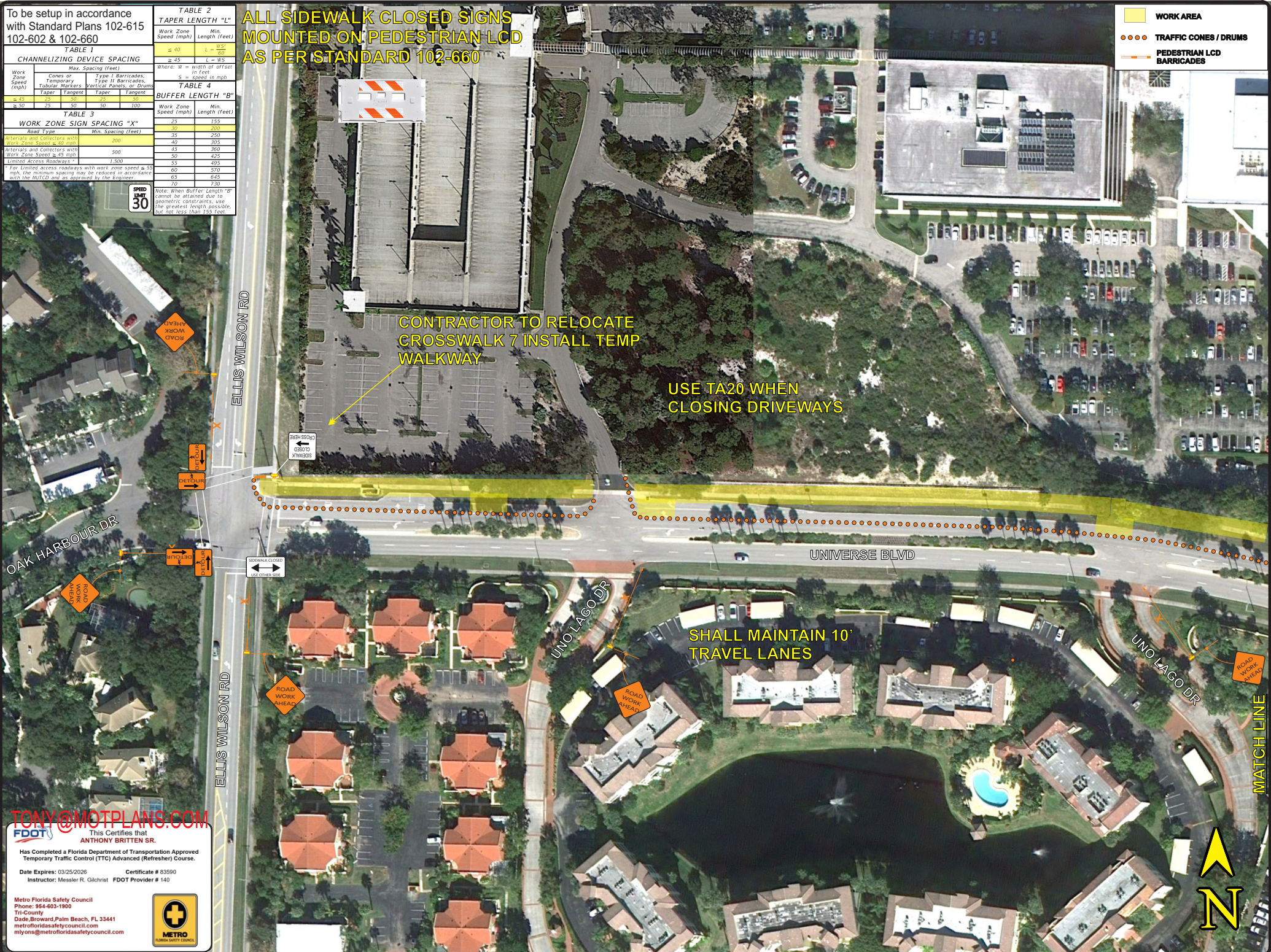
**TABLE 5
SPEED LIMIT**

30

Note: When Buffer Length "B" cannot be attained due to geometric constraints, use the greatest length possible, but not less than 155 feet.

ALL SIDEWALK CLOSED SIGNS MOUNTED ON PEDESTRIAN LCD AS PER STANDARD 102-660

- WORK AREA
- TRAFFIC CONES / DRUMS
- PEDESTRIAN LCD BARRICADES



TONY@MOTPLANS.COM

FDOT This Certifies that **ANTHONY BRITTEN SR.**

Has Completed a Florida Department of Transportation Approved Temporary Traffic Control (TTC) Advanced (Refresher) Course.

Date Expires: 03/25/2026 Certificate # 83890
Instructor: Messler R. Gilchrist FDOT Provider # 140

Metro Florida Safety Council
Phone: 954-603-1900
14-County
Dade, Broward, Palm Beach, FL 33441
metrofloridasafetycouncil.com
mycons@metrofloridasafetycouncil.com

To be setup in accordance with Standard Plans 102-615 102-602 & 102-660

TABLE 1 CHANNELIZING DEVICE SPACING

Work Zone Speed (mph)	Cones or Temporary Tubular Markers	Type I Barricades, Vertical Panels, or Drums
≤ 45	Taper	Taper
50	25	50
55	30	60
60	35	70
65	40	80
70	45	90

TABLE 3 WORK ZONE SIGN SPACING "X"

Work Zone Speed (mph)	Road Type	Min. Spacing (feet)
≤ 45	Arterial, Collector's with Work Zone Speed ≤ 45 mph	200
≤ 45	Arterial and Collector's with Work Zone Speed ≥ 45 mph	500
50	Limited Access Roadways	1,500
60	For limited access roadways with work zone speed ≤ 55 mph, the minimum spacing may be reduced in accordance with the MUTCD and as approved by the Engineer.	1,000
65		1,200
70		1,400

Speed Limit 30

TABLE 2 TAPER LENGTH "L"

Work Zone Speed (mph)	Min. Length (feet)
≤ 40	100
45	125
50	150
55	175
60	200
65	225
70	250

TABLE 4 BUFFER LENGTH "B"

Work Zone Speed (mph)	Min. Length (feet)
≤ 45	150
50	200
55	250
60	300
65	350
70	400

Note: When Buffer Length "B" cannot be attained due to geometric constraints, use the greatest length possible, but not less than 155 feet.

ALL SIDEWALK CLOSED SIGNS MOUNTED ON PEDESTRIAN LCD AS PER STANDARD 102-660

WORK AREA
 WORK AREA
TRAFFIC CONES / DRUMS
 TRAFFIC CONES / DRUMS
PEDESTRIAN LCD BARRICADES
 PEDESTRIAN LCD BARRICADES

USE TA20 WHEN CLOSING DRIVEWAYS

SHALL MAINTAIN 10' TRAVEL LANE @ EXIT

SHALL MAINTAIN 10' TRAVEL LANES

MATCH LINE

UNIVERSE BLVD

US 1/A1A

US 1/A1A

TONY@MOTPLANS.COM
 FDOT This Certifies that ANTHONY BRITTEN SR.

Has Completed a Florida Department of Transportation Approved Temporary Traffic Control (TTG) Advanced (Refresher) Course.
 Date Expires: 03/25/2026 Certificate # 83590
 Instructor: Messler R. Gilchrist FDOT Provider # 140

Metro Florida Safety Council
 Phone: 954-460-1900
 Tri-County
 Dade, Broward, Palm Beach, FL 33441
 metrofloridasafetycouncil.com
 myons@metrofloridasafetycouncil.com



DRAWN BY:
Tony Britten

MOT Plans

631 NE 45 Street
 Oakland Park, FL 33334
 (954) 560-0450

DATE: 7/6/2023

SITE LOCATION:



To be setup in accordance with Standard Plans 102-602 & 102-615

**TABLE 2
TAPER LENGTH "L"**

Work Zone Speed (mph)	Min. Length (feet)
≤ 40	L = $\frac{W^2}{60}$
≥ 45	L = 90

Where: W = width of offset
S = speed in mph

**TABLE 4
BUFFER LENGTH "B"**

Work Zone Speed (mph)	Min. Length (feet)
25	155
30	210
35	250
40	305
45	360
50	425
55	495
60	570
65	645
70	730

Note: When Buffer Length "B" in feet cannot be achieved due to geometric constraints, use the greatest length possible, but not less than 155 feet

**TABLE 1
CHANNELIZING DEVICE SPACING**

Max. Spacing (feet)

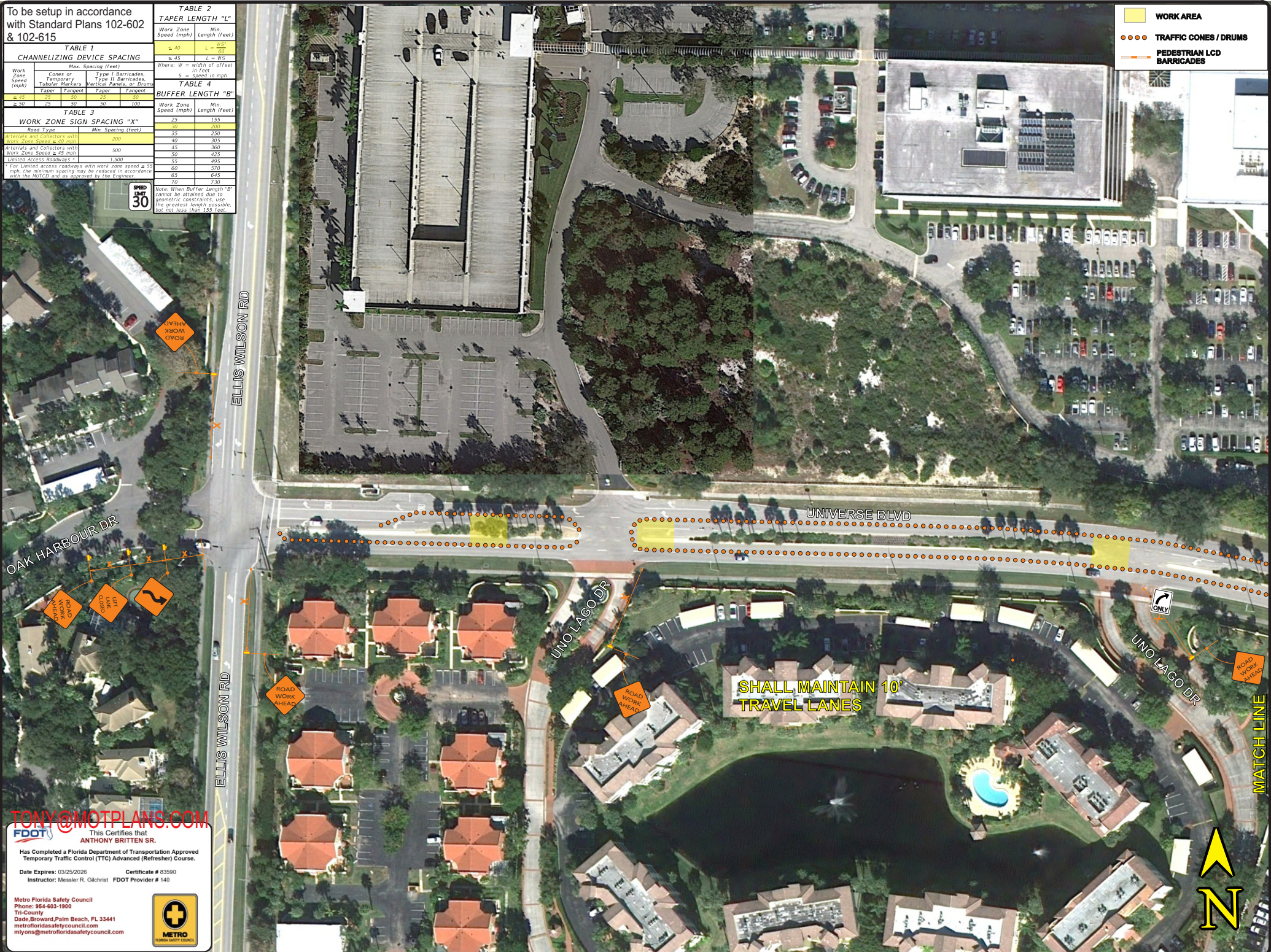
Work Zone Speed (mph)	Cones or Temporary Markers	Type I Barricades, Tubular Markers, Vertical Panels, or Drums
≤ 45	Taper	Taper
50	25	25
55	30	30
60	35	35
65	40	40
70	45	45

**TABLE 3
WORK ZONE SIGN SPACING "X"**

Road Type	Min. Spacing (feet)
Arterials and Collectors with Work Zone Speed ≤ 40 mph	200
Arterials and Collectors with Work Zone Speed ≤ 45 mph	300
Limited Access Roadways	1,500

Note: For limited access roadways with work zone speed ≤ 35 mph, the minimum spacing may be reduced in accordance with the MUTCD and as approved by the Engineer

- WORK AREA
- TRAFFIC CONES / DRUMS
- PEDESTRIAN LCD BARRICADES



TONY@MOTPLANS.COM

FDOT This Certifies that **ANTHONY BRITTEN SR.**

Has Completed a Florida Department of Transportation Approved Temporary Traffic Control (TTC) Advanced (Refresher) Course.

Date Expires: 03/25/2026 Certificate # 83890
Instructor: Messler R. Gilchrist FDOT Provider # 140

Metro Florida Safety Council
Phone: 954-603-1900
Tri-County
Dade, Broward, Palm Beach, FL 33441
metrofloridasafetycouncil.com
mycons@metrofloridasafetycouncil.com



To be used in accordance with Standard Plans 102-602 & 102-615

TABLE 1 CHANNELIZING DEVICE SPACING		TABLE 2 TAPER LENGTH "L"	
Work Zone Speed (mph)	Max. Spacing (feet)	Work Zone Speed (mph)	Min. Length (feet)
≥ 45	≥ 45	≥ 40	$L = \frac{WS^2}{100}$
30-45	≥ 30	25-40	$L = WS$

TABLE 3 WORK ZONE SIGN SPACING "X"		TABLE 4 BUFFER LENGTH "B"	
Road Type	Min. Spacing (feet)	Work Zone Speed (mph)	Min. Length (feet)
Arterial/Collector's with Work Zone Speed ≥ 45 mph	200	25	135
Arterial/Collector's with Work Zone Speed < 45 mph	500	30	200
Minor/Access Roadways	1,500	35	250
		40	305
		45	360
		50	425
		55	495
		60	570
		65	645
		70	730

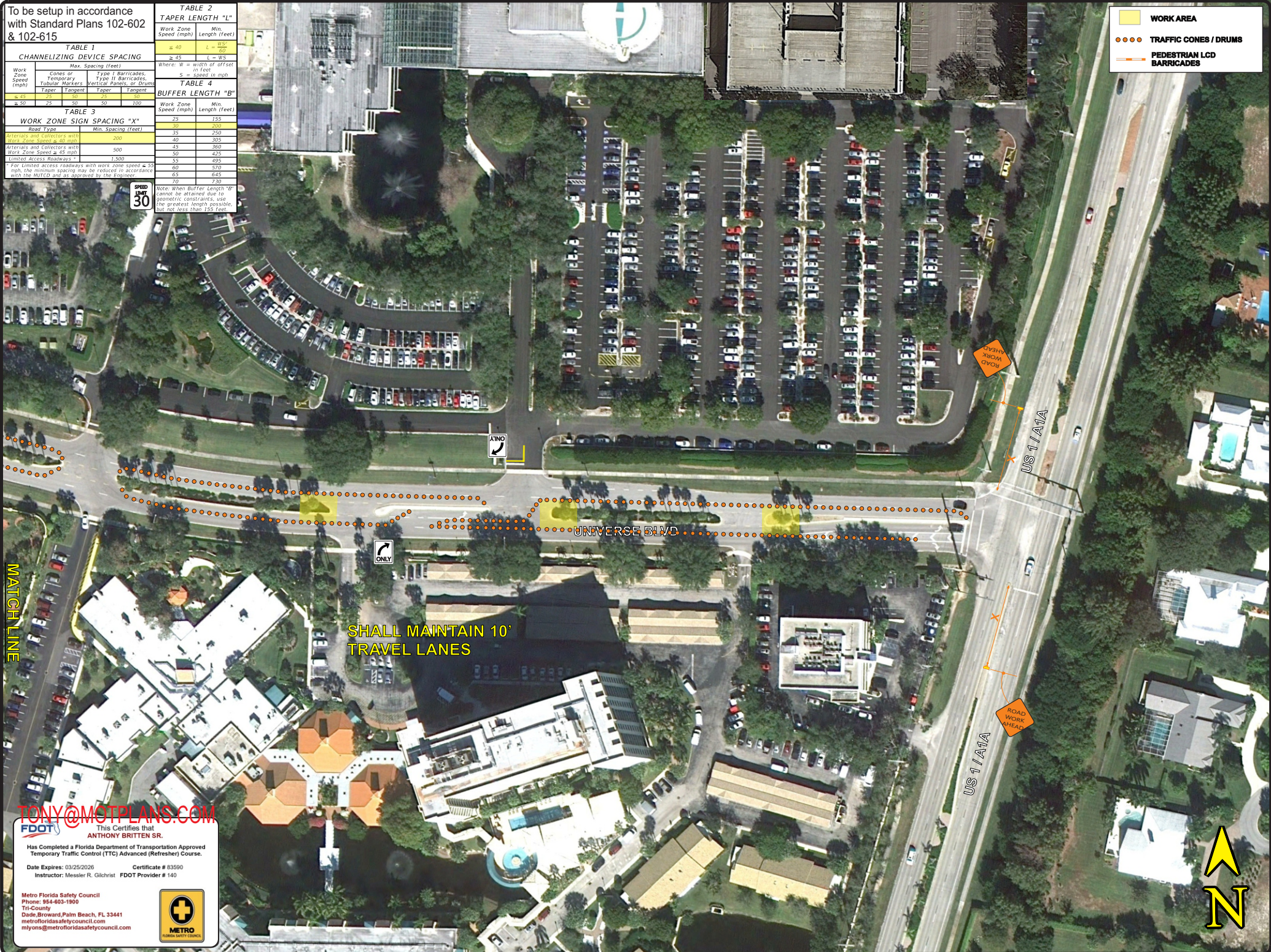
Where: W = width of offset in feet
S = speed in mph

Note: When Buffer Length "B" cannot be attained due to geometric constraints, use the greatest length possible, but not less than 155 feet.

WORK AREA

TRAFFIC CONES / DRUMS

PEDESTRIAN LCD BARRICADES



SHALL MAINTAIN 10' TRAVEL LANES

TONY@MOTPLANS.COM

FDOT This Certifies that **ANTHONY BRITTEN SR.**

Has Completed a Florida Department of Transportation Approved Temporary Traffic Control (TTC) Advanced (Refresher) Course.

Date Expires: 03/25/2026 Certificate # 83590
Instructor: Messler R. Gilchrist FDOT Provider # 140

Metro Florida Safety Council
Phone: 954-460-1900
Tri-County
Dade, Broward, Palm Beach, FL 33441
metrofloridasafetycouncil.com
myons@metrofloridasafetycouncil.com

To be setup in accordance with Standard Plans 102-615, 102-602 & 102-660

TABLE 2 TAPER LENGTH "L"

Work Zone Speed (mph)	Min Length (feet)
≤ 40	$L = \frac{W^2}{60}$
≥ 45	$L = W \cdot S$

Where: W = width of offset in feet
S = speed in mph

TABLE 3 WORK ZONE SIGN SPACING "X"

Road Type	Min. Spacing (feet)
Interstates and Collectors with Work Zone Speed ≤ 40 mph	200
Interstates and Collectors with Work Zone Speed ≤ 45 mph	300
Limited Access Roadways	1,500

Note: For limited access roadways with work zone speed ≤ 35 mph, the minimum spacing may be reduced in accordance with the MUTCD and as approved by the Engineer.

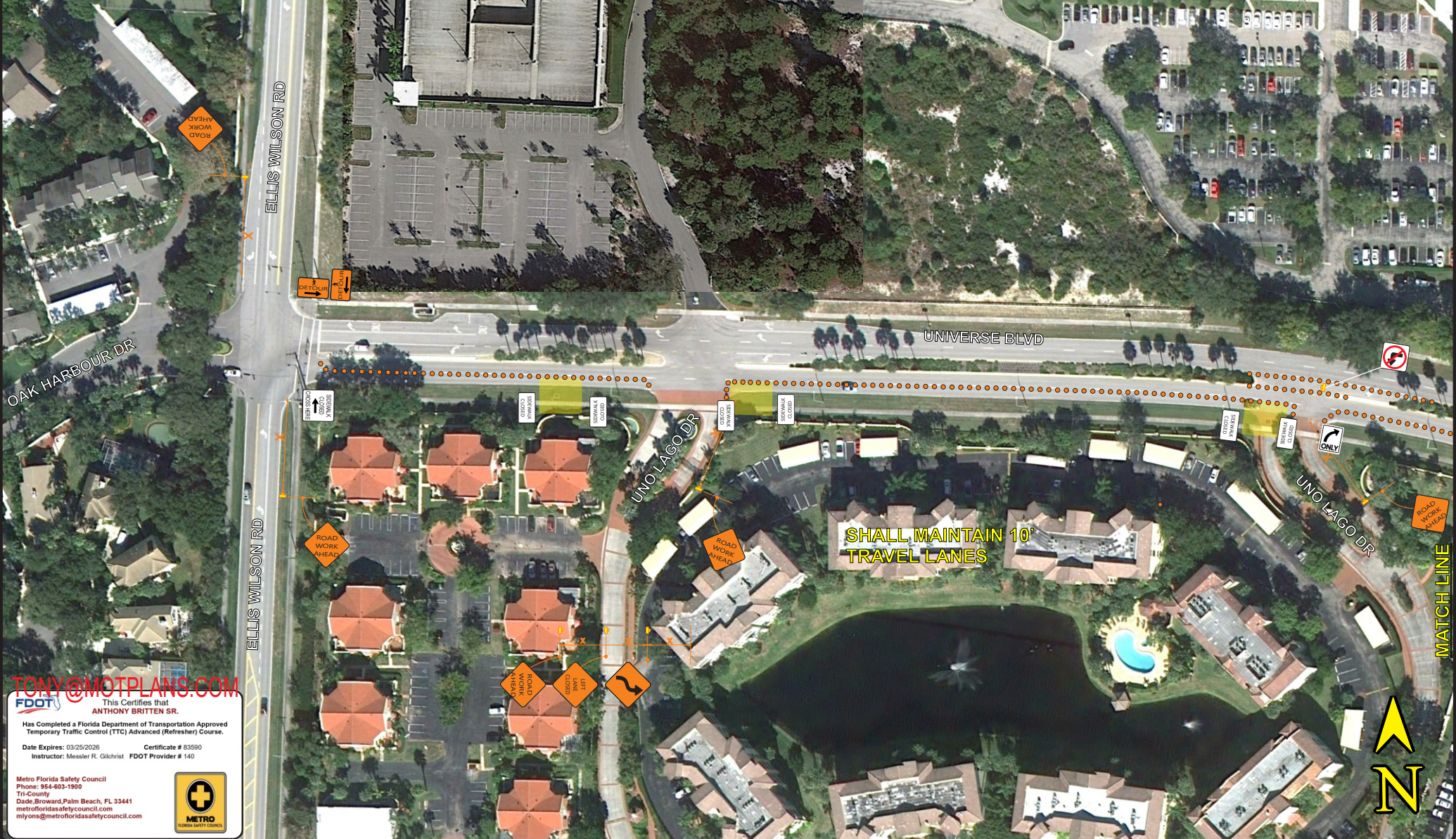
TABLE 4 BUFFER LENGTH "B"

Work Zone Speed (mph)	Min. Length (feet)
25	155
30	210
35	250
40	305
45	360
50	425
55	495
60	570
65	645
70	730

Note: When Buffer Length "B" cannot be achieved due to geometric constraints, use the greatest length possible, but not less than 155 feet.

ALL SIDEWALK CLOSED SIGNS MOUNTED ON PEDESTRIAN LCD AS PER STANDARD 102-660

- WORK AREA
- TRAFFIC CONES / DRUMS
- PEDESTRIAN LCD BARRICADES



TONY@MOTPLANS.COM

FDOT This Certifies that **ANTHONY BRITTEN SR.**

Has Completed a Florida Department of Transportation Approved Temporary Traffic Control (TTC) Advanced (Refresher) Course.

Date Expires: 03/25/2026 Certificate # 83890
Instructor: Messler R. Gilchrist FDOT Provider # 140

Metro Florida Safety Council
Phone: 954-603-1900
Tri-County
Dade, Broward, Palm Beach, FL 33441
metrofloridasafetycouncil.com
mycons@metrofloridasafetycouncil.com

To be setup in accordance with Standard Plans 102-615, 102-602 & 102-660

TABLE 1
CHANNELIZING DEVICE SPACING

Work Zone Speed (mph)	Max. Spacing (feet)
≤ 45	25
46 - 50	50
51 - 60	75
61 - 80	100

TABLE 2
TAPER LENGTH "L"

Work Zone Speed (mph)	Min. Length (feet)
≤ 40	150
41 - 45	200
46 - 50	250
51 - 60	300
61 - 80	400

TABLE 3
WORK ZONE SIGN SPACING "X"

Road Type	Min. Spacing (feet)
Interstates and Collectors with Work Zone Speed ≤ 40 mph	200
Interstates and Collectors with Work Zone Speed ≤ 45 mph	300
Limited Access Roadways	1,500

TABLE 4
BUFFER LENGTH "B"

Work Zone Speed (mph)	Min. Length (feet)
25	155
30	200
35	250
40	305
45	360
50	425
55	495
60	570
65	645
70	730

Note: When Buffer Length "B" cannot be achieved due to geometric constraints, use the greatest length possible, but not less than 155 feet.

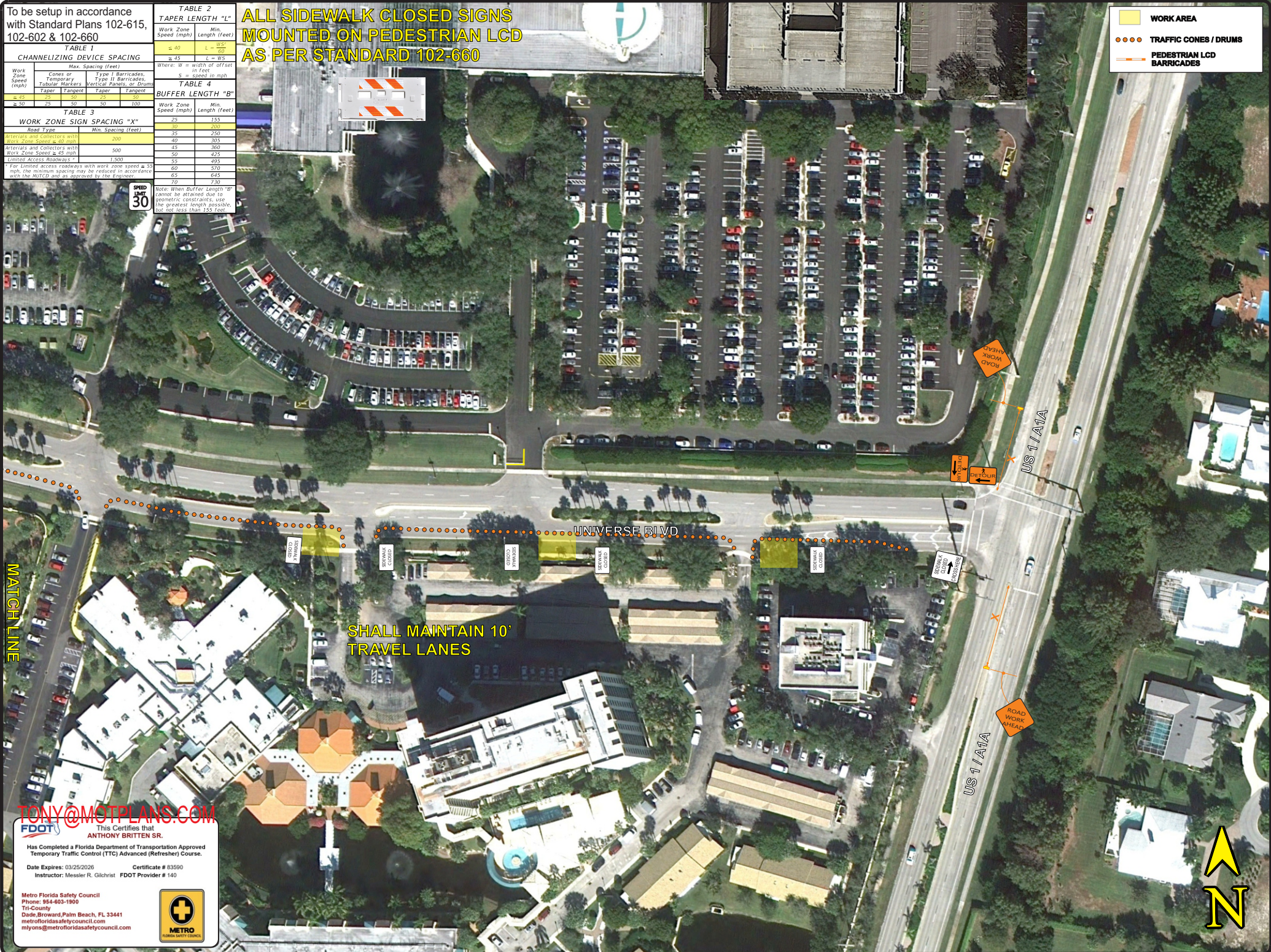
Where: W = width of offset
S = spacing in mph

Cones or Temporary Tubular Markers
Type I Barricades, Vertical Panels, or Drums
Taper
Tangere

Speed Limit 30

ALL SIDEWALK CLOSED SIGNS MOUNTED ON PEDESTRIAN LCD AS PER STANDARD 102-660

WORK AREA
 WORK AREA
 TRAFFIC CONES / DRUMS
 PEDESTRIAN LCD BARRICADES



SHALL MAINTAIN 10' TRAVEL LANES

TONY@MOTPLANS.COM
 FDOT This Certifies that ANTHONY BRITTEN SR.

Has Completed a Florida Department of Transportation Approved Temporary Traffic Control (TTG) Advanced (Refresh) Course.
 Date Expires: 03/25/2026 Certificate # 83590
 Instructor: Messler R. Gilchrist FDOT Provider # 140

Metro Florida Safety Council
 Phone: 954-893-1900
 Tri-County
 Dade, Broward, Palm Beach, FL 33441
 metrofloridasafetycouncil.com
 myoms@metrofloridasafetycouncil.com



DRAWN BY:
Tony Britten

MOT Plans

631 NE 45 Street
 Oakland Park, FL 33334
 (954) 560-0450

DATE: 7/6/2023

SITE LOCATION: